

Aston Road Raynes Park, SW20 8BG

£925,000 Freehold

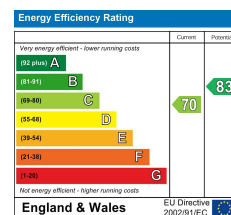
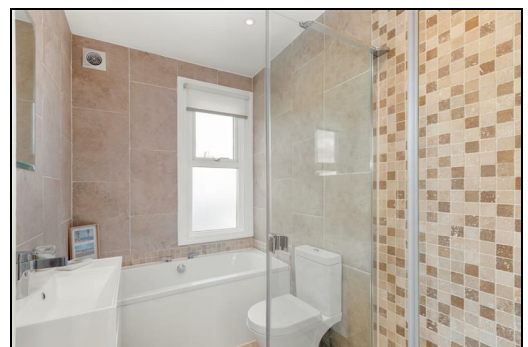
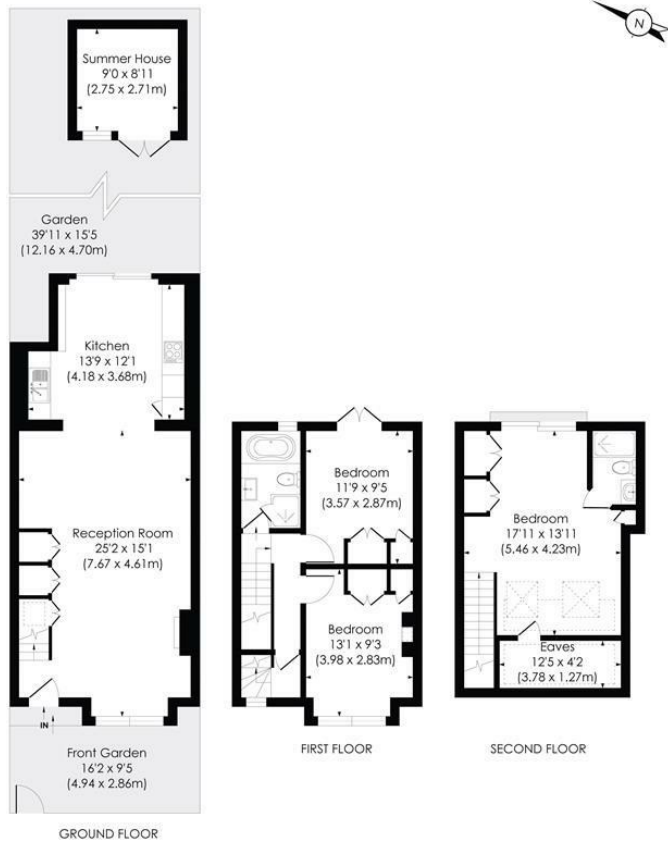


ASTON ROAD, SW20

Approx. Gross Internal Floor Area

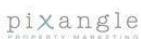
1298 Sq. ft/120.62 Sq. m (Incl. Eaves and Summer House)

1166 Sq. ft/108.37 Sq. m (Excl Eaves and Summer House)



- Three Double Bedroom
- Two Modern Bathrooms
- Edwardian Apostle House
- Spacious Fully Open Ground Floor
- 0.3 Miles To Raynes Park High Street
- No Onward Chain
- Superb Primary Bedroom With En Suite
- Landscaped Rear Garden With Home Office
- EPC - C
- Council Tax Band - D

© Pixangle Property Marketing Ltd. info@pixangle.com Tel: 0208 870 2118
 This floor plan has been prepared for the purpose of illustration only in accordance with the latest RICS code of measuring practice and is not to scale. All measurements and areas are approximate and whilst every effort has been made to ensure the accuracy of the plan contained here, no responsibility is taken for any error, omission or misstatement.



For Free Mortgage Quote and Best Mortgage Rates, call Ellisons Mortgage Advisor on 0208 944 9595



Although these particulars are believed to be correct, their accuracy is not guaranteed and they do not form part of any contract.

Celebrating 30 years of successful Sales and Lettings in Merton

